

Richmond Hill

RICHMOND HILL
Going UP

Organics Collection in High-Rise Buildings

Rosanne Fritzsche - Waste Management Coordinator
October 27, 2011



Going GREEN
RICHMOND HILL

Richmond Hill

Commitment to Multi-res

- Meet Provincial Targets
- Regional Joint Waste Diversion Strategy
- Richmond Hill Strategic Plan

- Multi-res site plan collection policy

Service Level Provided

- Existing Program
 - Waste collection 1 x week
 - Blue Box materials 1 x week (totes or front end)
 - Bulky items – on call – every other week along the curbside route
 - White goods - monthly by appointment
 - Facilitated an independent E-waste collection
- Organics at 21/80 buildings (2,358 / 9,214 units)

It's Super with the Supers

- Lunch 'n learn meetings
 - Supers / property managers
 - waste management updates
 - networking opportunities.
- Venue to introduce **GoingUP**
 - 3 buildings volunteer for Pilot



The Pilot Project – 3 Buildings

- 1 year pilot (2009-2010)
 - 1 condo building, 130 units
 - 1 York Region housing, seniors, 125 units
 - 1 new condo with tri-sorter 104 units



Preliminary Results in Pilot Buildings

Building # 1

Average 9.25 kg/unit/wk

- 4.70 kg Blue Box
- 2.22 kg Green Bin
- 2.34 kg Garbage

Low contamination rate

- 5.86% Blue Box
- 1.32% Green Bin

High capture rates

- 93.29% Blue Box
- 57.19% Green Bin

Overall diversion 71.39%

Building #2

Average 6.45 kg/unit/week

- 2.31 kg Blue Box
- 2.41 kg Green Bin
- 1.73 kg Garbage

Low contamination rates

- 3.63 % Blue Box
- 1.51 % Green Bin

High capture rates

- 86.56% Blue Box
- 70.62% Green Bin

Overall diversion 71.36%

Promotional materials

- Start Up kits include:
 - Counter top container
 - Box of Compostable bags
 - Newsletter
 - Magnet
 - What Goes Where? guide
- Magnets and Newsletters translated into Chinese, Farsi and Russian.



Banners & Posters



DO YOUR PART AND WATCH IT GROW.

How can you make your building greener? Help us compost by collecting your organic waste in your new **Organics Bin**. Simply empty your Bin at the designated location shown below.



THIS IS WHERE YOU DROP YOUR ORGANICS:



IT'S AMAZING WHAT CAN GET A SECOND LIFE.

Using your **Blue Box** to recycle not only minimizes what is sent to landfill, these items have a second life in new products we use every day such as carpet, clothing, cribs — even chairs!



THIS IS WHERE YOU DROP YOUR RECYCLABLES:



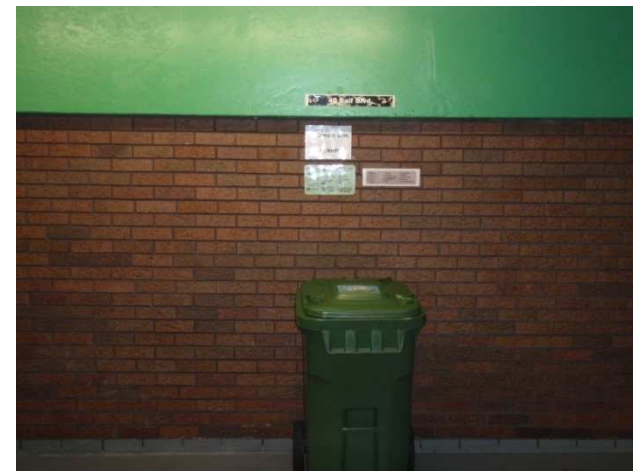
Launching the program

- Commitment from building management.
- Doorhangers invite residents to Open House
- Display units in the hall
- Information and start up kits distributed
- Presentation and Q&A



Collection methodology

- Blue Box materials – front end service or 95 gallon totes, depending on quantity and space
- Organics in compostable bags – in 65 gallon totes
- Garbage collected in front end bins weekly



Lessons learned

- Personal touch
- Make it easy
 - Provide the right tools
 - Proper signage
- Costs
 - Campaign costs vs. ongoing costs

Where do we go from here?

- Expansion of program to additional buildings
- Evaluation of collection methodology
 - Move to dedicated service, front ends?
- Additional diversion options by the building
 - Electronics
 - Clothing
 - Internal reuse centres



Thank You



For more information please contact

Rosanne Fritzsche, Waste Management Coordinator

Town of Richmond Hill

905-771-5527

rfritzsche@RichmondHill.ca

