

Implementation of the Green Bin Program to Multi-unit Residential Dwellings

Sue Foster
Solid Waste Management Services
City of Toronto



Today's Presentation

- Background
- Pilot Study
- Implementation Strategy
- Green Bin Rollout
- Promotion & Education
- Challenges after Implementation

Background Target 70



- In 2007, Council approved a Plan to reach 70% waste diversion from landfill by 2010
- Included in this plan were programs targeting the multi residential sector which represents 50% of the City's population.
- Implementation of city wide SSO collection from multi-residential buildings is necessary to meet this goal.

Slide 3

s1

sfoster2, 9/27/2011

Green Bin Program Is Coming



- The Green Bin Program captures food & organic wastes in a separate collection container
- Prior to the rollout to all multi-residential buildings the Green Bin Program had been successfully piloted in 30 buildings city-wide

Pilot Study – Deep Collection

- In 2002 the City began testing deep collection of organic material in 2 buildings
 - A 20 unit building without chutes had the Molok system installed for waste, recycling and organic materials
 - A 266 unit building with chutes had the Alfa collection system installed for organic material collection only

Pilot Study – Deep Collection

Collection using an overhead HIAB crane

Containers are 40% above ground and 60% below ground



Pilot Study - various

- Front End Collection
- 35 Gallon Carts



Green Bin Pilot Results

- Waste composition study of the pilot buildings was done to determine the quality of organics collected from the pilot buildings in comparison to the single family households.
- Quantities collected averaged 1kg/hh/week
- A previous waste composition study of a sampling of buildings showed 4kg/hh/week of organics are available in the waste stream.
- No noticeable difference in quality; material had minimal contamination

Challenges to Implementing an Organics Program

- Buildings have several characteristics that present barriers to waste diversion which include:
 - Lack of convenience for residents
 - High turnover rate
 - Site infrastructure
 - Lack of property management support
 - Increased cost to property management to implement program

Site Specific Approach



Single chute tri-sorter systems



Non chute system



Green Bin Program Rollout

- Source separated organics program started in 2008 with invitations to an initial 300 buildings
- Focusing on buildings with centralized collection areas

Front End



35 Gallon Carts



- To date 2543 buildings have been invited and of those 580 are on collection

Green Bin – Implementation Strategy

City staff

- contact building management when ready to implement Green Bin Program (by area)
- provide specifications for buildings to purchase centralized collection container(s)
- coordinate ordering and delivery of in-unit containers

Green Bin – Implementation Strategy

City Staff

- will be available to perform site visits to assist buildings throughout implementation
- provide presentations to both property management/supers and residents as requested
- Building management call when they have received their in-unit and centralized collection containers to set up a collection start date

Provision of In-Unit Green Bin Containers (“Kitchen Catchers”)

- The City provides in-unit organic kitchen containers for all units, for all customers on City service
- Buildings are eligible to receive one in-unit container per unit
- In-unit containers are delivered to the building



Green Bin – Promote & Educate

- A launch newsletter and Green Bin Organics information card is included (inside in unit kitchen catcher)
- Literature is available in various languages
- Designate a special area (near recycling drop off area) for organics
- Introduce the program
- Promote the program
- Maintain the program (keep posters up, keep bins clean, remind residents of importance of participating)

What goes in the Green Bin?

YES	NO
Fruit and vegetable scraps	Plastic wrapping, containers, trays, milk bags
Meat and fish products	Dryer lint, sheets
Pasta, bread and cereals	Foam polystyrene
Dairy products, egg shells	
Coffee grounds and filters, tea bags	
Soiled paper towels, tissues	
Soiled paper food packaging – ice cream boxes, sugar and flour	
Cake, cookies, candies	
Diapers, sanitary products	
House plants, including soil	
Animal waste, bedding and kitty litter	

GREENBIN

QUESTIONS?
Vous avez des questions?
Demande?
¿Tiene alguna pregunta?
Tem Perguntas?

TORONTO
Going Green
ISSUE NO. 1

INTRODUCING... THE GREEN BIN PROGRAM

By participating in the Green Bin Program you will be keeping organic material – such as food waste and soiled paper food products – out of the garbage and turning it into compost. This will help us reduce the amount of waste going to landfill and move us closer to achieving our goal of 70% diversion.

What do I need to do?

You will receive an indoor kitchen container with a special hanging bracket that can fit under your kitchen sink or in another convenient location. All you have to do is put your household organic waste, such as food scraps and soiled paper food products (see page 3 for details), in your organics container.

You can line the kitchen container using plastic bags (used grocery bags are fine). Once full, just remove the plastic bag and toss it in one of the large Green Bins stored in your central waste/recycling collection site. Please only twist or loosely tie the plastic bag (no twist ties) because it helps us separate the plastic from the organics at the processing facility.

You can continue to recycle the same materials you did before – your recycling collection will not be affected by the Green Bin Program. The recycle bins should be clearly marked in your central waste/recycling drop-off area. You can also continue to throw out your garbage in the same location you are using now (possibly a garbage chute or in your central waste/recycling collection site).

Participation is Easy

- Residents can line their in-unit organics collection containers with plastic bags
- Then take their organic materials in the bag to the common drop off area
- Very similar to how recycling works



Organics Processing



End Destination: Anaerobic Digester Facility



Take the Mystery out of Recycling and Organics Programs



Tips for Property Managers

- Make it easy for residents to participate in all programs to keep as many items as possible out of garbage
- Clearly mark drop off areas with information/direction
- Use City provided posters and stickers

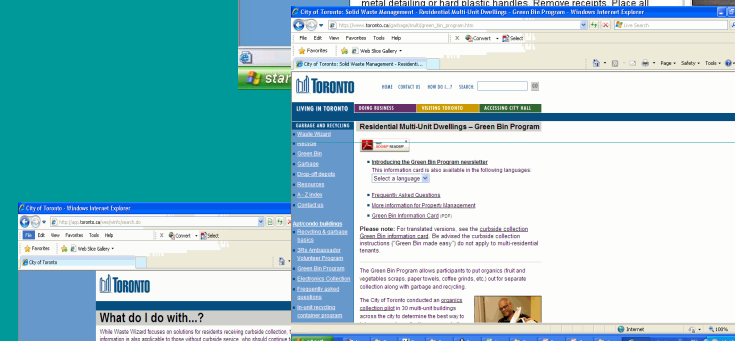
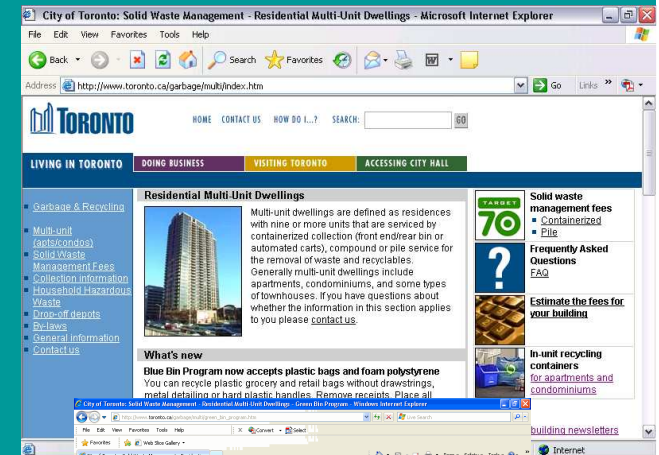
Promotion and Education Tools

- Website

- www.toronto.ca/garbage/multi/index
- FAQs
- Recycling promotion information
- Information on in-unit recycling containers
- Information on Green Bin Program rollout
- Online fee calculator
- Waste Wizard
- Presentations

- Contact Information:

Dedicated email and phone line



Promotion and Education Tools Targeting Residents

- Available Literature:
 - Recycling Guide (available in 23 languages)
 - Common Area Posters
 - Recycling & Green Bin Stickers
 - Recycling Handbook for Owners, Property Managers, Superintendents
 - Green bin information cards (available in 18 languages)
 - Green bin stickers
 - Green bin posters
 - Apt/Condo Recycling Calendar

- Advertising:
 - In-lobby posters, flyers, etc.
 - Articles for building newsletters
 - Draft letters to residents
 - All the above can be downloaded from website



Challenges after Implementation of an Organics Program

- Contamination
- Non participation
- Odour Issues

Questions